

37749-MD

12VDC Tool Motor

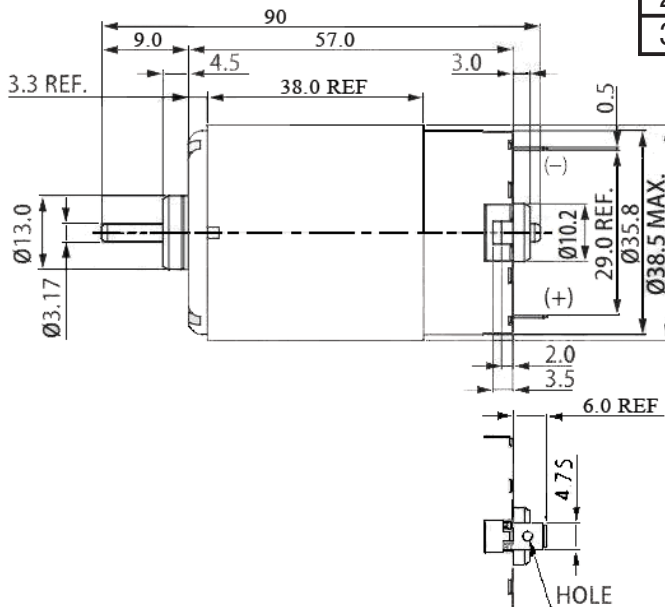
MFG: Mabuhci
P/N: RS555PC-3550
Voltage: 9-30 (12V Nominal intermittent duty above 16V)
 Reversible motor.
 Rated @12VDC: 4800RPM @ 170mA No Load
 9.9A @ Stall
 Stall Torque: 2253 gcm
 3.17mm/1/8" dia. X 9mm/5/16" steel shaft.
 Solder terminals
 2x m3-0.5 front mounting holes
L: 2-1/2" Body **Dia:** 1-1/2" **WT:** .55



Maximum Efficiency

Voltage	RPM	Current	Torque	Watts
12VDC	4240	1.3A	261gcm	11.4

Volts	No Load RPM	Current
9V	3800	140mA
12V	4800	170mA
24V	9600	190mA
30V	12000	220mA



Information including Drawings, Schematics, Links and Code (Software) Supplied or Referenced in this Document is supplied by MPJA inc. as a service to our customers and accuracy or usefulness is not guaranteed nor is it an Endorsement of any particular part, supplier or manufacturer. Use of information and suitability for any application is at users own discretion and user assumes all risk.

Information Subject to Change Without Notice
 All rights are retained by the respective Owners/Author(s)



MARLIN P. JONES & ASSOC., INC.

P.O. Box 530400 Lake Park, FL 33403
 800-652-6733 FAX 561-844-8764
 WWW.MPJA.COM